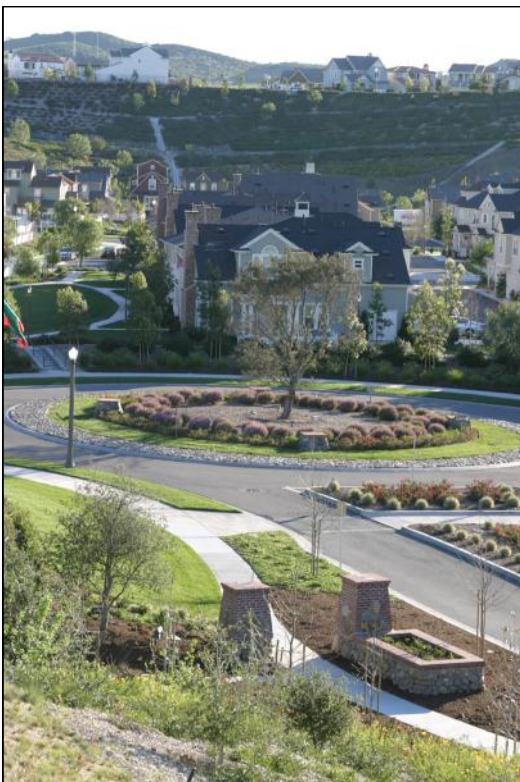




# Hall & Foreman, Inc.

## Setting the Bar Higher Through Solutions, Performance and Relationships

Honoring the Past...Building the Future





# Comprehensive Services for Sustainable Projects

Hall & Foreman, Inc. (HFI), established in 1961, provides comprehensive engineering, planning and surveying services for both public and private sectors. With 50 years of dedicated, professional experience in the Southern California region, HFI is the engineering firm of choice for hundreds of Clients from developers and corporations to cities and counties. HFI remains committed to working on their behalf while maximizing project value.

HFI supports USBGC's LEED certification program in both real-world application and in spirit. We understand that the intent of the LEED program is to have all the disciplines involved in a project work together to design and create a project that is sustainable while minimizing environmental impacts. As a result, HFI is experienced in collaborating with the entire team to achieve the project's targeted certification.

- Commercial/Retail
- Construction Management/ Inspection
- Due Diligence
- Entitlement Coordination
- Industrial/Office
- Infill/Redevelopment
- Infrastructure/Grant Funding
- Land Planning
- Laser Scanning
- LEED Administration
- Municipal
- Public Works
- Renewable Energy
- Residential Land Development
- Surveying/Mapping
- Sustainable Design
- Traffic Engineering
- Transportation Planning
- Water Resources Engineering



*“HFI seeks to understand Clients’ needs and expectations, and then strives to exceed those expectations.”*

John Hogan, CEO

## Mission Statement

Hall & Foreman, Inc., a consulting firm providing professional engineering, surveying, and land planning services, is committed to designing a better world while creating significant tangible value for our clients.



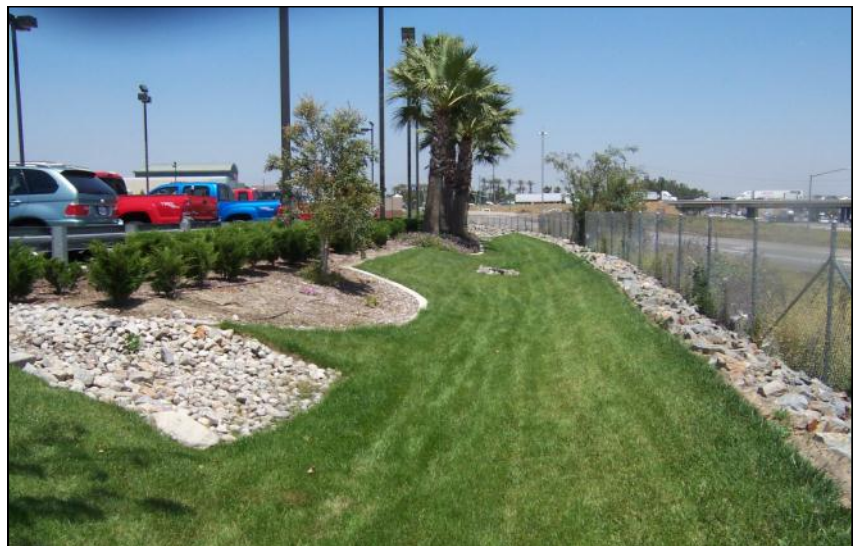
### The new Statewide Storm Water Permit Went Live on July 1, 2010 Is Your Site at Risk?

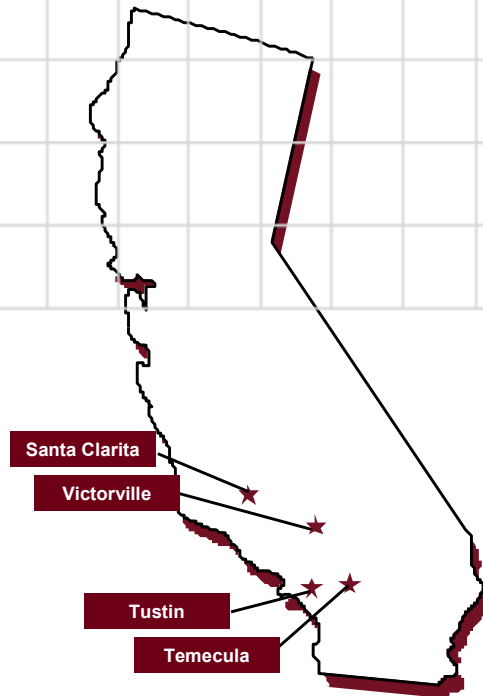
The new Statewide Storm Water NPDES Permit became fully effective July 1, 2010. Since the new permit is more stringent, there are a number of regulations you need to assess against your project.

Your goal is to be compliant while managing your budget. Two new elements under the new permit are:

- Your current and future Storm Water Pollution Prevention Plans (SWPPP) must be written, amended, and certified by a Qualified SWPPP Developer. Who prepared your existing SWPPP?
- Your site will be assigned a Risk Level. That Risk Level will determine compliancy requirements. What Risk Level is your site?

HFI's water quality specialists are ready to help you with compliancy. Contact us at: [stormwater@hfinc.com](mailto:stormwater@hfinc.com), or call 800-544-2114.





**SANTA CLARITA**

25152 Springfield Court  
Suite 350  
Santa Clarita, CA 91355  
661.284.7400  
Fax 661.284.7401

**TEMECULA**

41951 Remington Avenue  
Suite 130  
Temecula, CA 92590  
951.294.9300  
Fax 951.294.9301

**TUSTIN**

17782 17th Street  
Suite 200  
Tustin, CA 92780-1947  
714.665.4500  
Fax 714.665.4501

**VICTORVILLE**

14297 Cajon Avenue  
Suite 101  
Victorville, CA 92392  
760.524.9100  
Fax 760.524.9101

**[www.hfinc.com](http://www.hfinc.com)**  
**[info@hfinc.com](mailto:info@hfinc.com)**

Scan this with  
your smartphone  
to go directly to  
HFI's website



Engineering ▪ Planning ▪ Surveying